

Powerful yet quiet suction

Protects from noise and harmful smoke.

Adjustable air volume,
freestanding ducts,
and a variety of
other features solve
worksite issues.

Easy line changes

**Powerful
yet quiet**



HAKKO **FA-430** **ESD SAFE**
FUME EXTRACTION

Air-purifying fume extractor

*Duct set sold separately



HAKKO FA-430 ESD SAFE FUME EXTRACTION

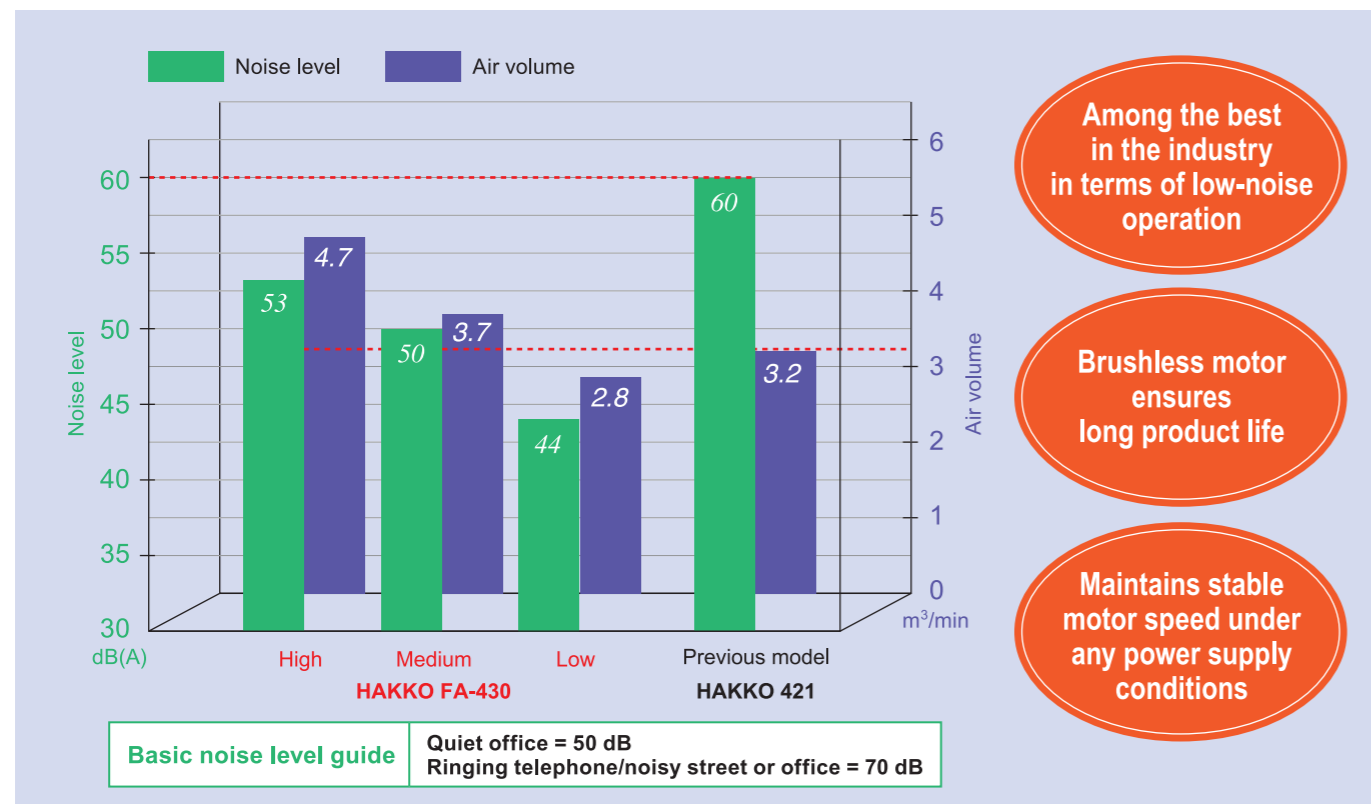
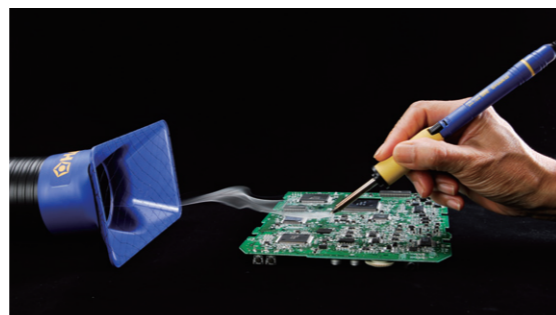
Air-purifying fume extractor

Quiet operation and powerful suction

Exhaust noise has been reduced without sacrificing suction performance by the addition of a silencer unit to the exhaust outlet to ensure smooth air outflow. A high-performance motor with 1,500 Pa of static pressure provides powerful suction and quiet operation.

| | HAKKO FA-430 | | Previous model (HAKKO 421) | |
|--------|--------------------|--------------------------------|----------------------------|--------------------------------|
| | Noise level dB (A) | Air volume m ³ /min | Noise level dB (A) | Air volume m ³ /min |
| High | 53 | 4.7 | 60* | 3.2* |
| Medium | 50 | 3.7 | | |
| Low | 44 | 2.8 | | |

*Values measured when the unit was used with a 60 Hz power supply.



Notes regarding graph: The HAKKO FA-430 features significantly reduced noise level in medium airflow mode despite the fact that suction performance remains almost unchanged compared to the previous model. High airflow mode also provides quieter operation than the previous model. *Suction performance values are for when two ducts are used. *Measured values for HAKKO 421 were taken when the unit was used with a 60 Hz power supply.

Catch harmful smoke with freestanding ducts and adjustable air volume to suit your working environment

Is your smoke absorber affected by air conditioning? Are you fed up with having to re-adjust ducts after every line change? The HAKKO FA-430 fume extractor is the answer to your problems.

Airflow adjustment

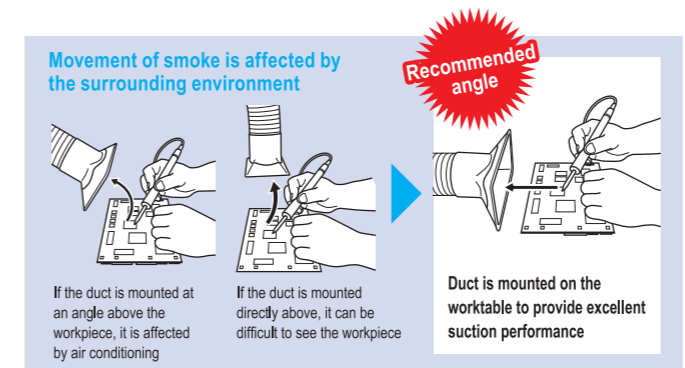
Three airflow modes are available: High, Medium, and Low. Significantly improve your working environment by using an airflow volume that suits the worksite and the job.

| | |
|--------------------|--|
| Low mode | Not easily affected by the surrounding environment. For use in small, quiet locations. (For when low-noise operation is a priority.) |
| Medium mode | For normal use. |
| High mode | For use in locations that are significantly affected by the surrounding environment. (For when suction performance is a priority.) |

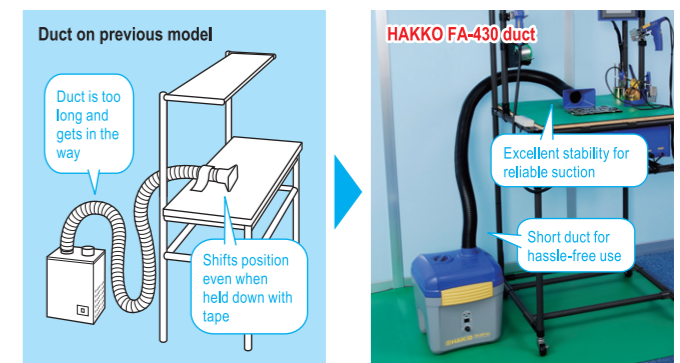
What do you mean by "surrounding environment"? Smoke flows in unexpected directions due to a variety of factors; not just because of the influence of air conditioning. High mode is recommended if your worksite is situated near a doorway, in a spot where people continuously pass by, near the exhaust outlet of a large machine, or in a similar location. It is possible to use low mode in laboratories and other places where these kinds of influences are limited.

Freestanding ducts

Ducts can be bent or lengthened as desired and maintain their shape after adjustment, letting you place them exactly where suction is needed. Say goodbye forever to the hassle of long, heavy, and hard-to-handle ducts.



Bends and stretches freely for perfect placement!



| | Length | Weight |
|-----------------------|--------|--------|
| Duct for HAKKO FA-430 | 1.2m | 0.6kg |

Filter replacement notification function ensures excellent filtering efficiency can be maintained at all times

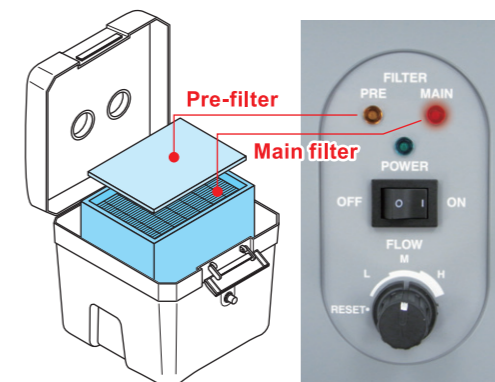
No matter how sophisticated a fume extractor is, if the filter is not replaced at the correct time, it will not be able to give maximum performance. The HAKKO FA-430 detects the number of fan revolutions and notifies the operator of the appropriate time to replace the filter, guaranteeing a comfortable working environment.

Pre-filter

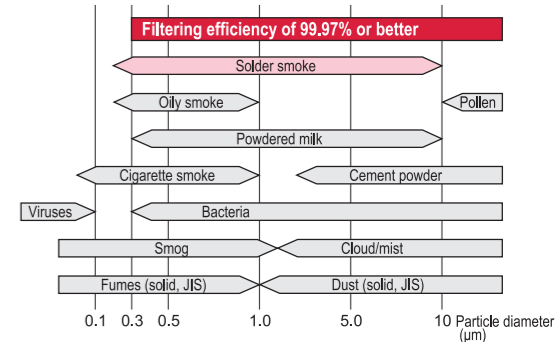
When the pre-filter is 80% clogged or has been used for 200 hours, the orange indicator flashes on and off.

Main filter

When the 10th pre-filter needs replacing, the orange and red lamps flash on and off.



Aerosol particle diameter range





Specifications

| | |
|---|-----------------------------------|
| Power consumption | 120 W |
| Maximum suction capacity (with single duct) | 4.1 m ³ /min (145 cfm) |
| Maximum suction capacity (with two ducts) | 4.7 m ³ /min (167 cfm) |
| Filtering efficiency*1 (Low/Medium mode) | 99.97% 0.3 μm |
| Filtering efficiency*1 (High mode) | 99.96% 0.3 μm |
| Noise level*2 (Medium mode) | 50 dB (A) |
| Dimensions | 330 (W) x 366 (H) x 343 (D) mm |
| Weight | 7.5 kg |
| Static pressure | 1500 Pa |
| Duct Set (sold separately) | ø55 mm x 1.2 m (ESD-safe) *3 |

*1 Initial value for filtering efficiency measurement using airborne dust counting method.
*2 Measured in an anechoic chamber of 1 m³.
*3 Net is not ESD-safe.

Duct set (With rectangular nozzle)



Duct set (With round nozzle)

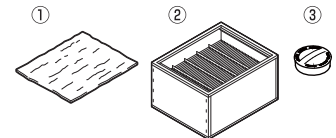


Packing List

| | |
|---|--|
| HAKKO FA-430 | Main unit, Power cord, Cap, Main filter, Pre-filters (x10), Instruction manual |
| Duct Set C1571 (With rectangular nozzle) Duct set sold separately | Duct (1.2 m), Adapter, Rectangular nozzle, Net, Instruction manual |
| Duct Set C1572 (With round nozzle) Duct set sold separately | Duct (1.2 m), Adapter, Round nozzle, Net, Instruction manual |

Replacement Parts & Options

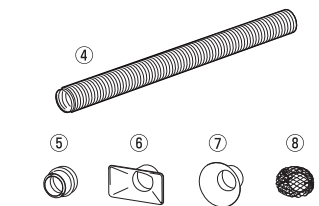
| Part No. | Part Name | Specifications |
|----------|----------------------------|---|
| A1572 | ① Pre-filter (10 per pack) | Eliminates 65% of particles 0.3 μm or larger. |
| A1573 | ② Main filter | Eliminates 99.97%*1 of particles 0.3 μm. |
| B3619 | ③ Cap*2 | For use when storing the main unit without ducts. |



*1 Initial value for filtering efficiency measurement using airborne dust counting method.
*2 One cap is included with the main unit.

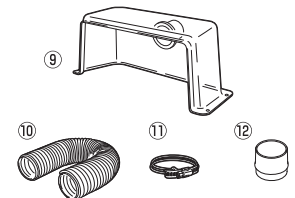
Option

| Part No. | Part Name | Specifications |
|----------|-----------------------|---|
| B3642 | ④ Duct | ø55 x 1.2 m |
| B3620 | ⑤ Adapter | For attaching duct to main unit. |
| B3622 | ⑥ Nozzle, rectangular | For absorbing smoke from the side. |
| B3623 | ⑦ Nozzle, round | For absorbing smoke from above. |
| B3625 | ⑧ Net (5 per pack) | For preventing contaminants from being absorbed. (Mesh dimensions: Approx. 10 mm x 10 mm) |



NOTE The benchtop hood detailed below requires the separate purchase of a ø75 duct, duct band (B2416), and 3-inch adapter (B3621).

| Part No. | Part Name | Specifications |
|----------|-----------------------------|--|
| B2418 | ⑨ Benchtop hood | For stopping smoke from escaping upwards without being affected by air conditioning. |
| B2410 | ⑩ Duct | Required when using benchtop hood. *ø75 x 2 m. Not freestanding. |
| B2416 | ⑪ Duct band (2 per pack) | Required when using benchtop hood. |
| B3621 | ⑫ Adapter (for 3-inch duct) | Required when using benchtop hood and ø75 duct. |



HAKKO
HAKKO CORPORATION
OVERSEAS AFFILIATES

U.S.A.
AMERICAN HAKKO PRODUCTS, INC.
28920 N. AVE. WILLIAMS VALENCIA, CA 91355, U.S.A.
TEL: (661) 294-0090 FAX: (661) 294-0096
Toll Free (800)88-HAKKO
4 2 5 8
http://www.hakkousa.com

HEAD OFFICE
4-5, SHIOKUSA 2-CHOME, NANIWA-KU, OSAKA, 556-0024 JAPAN
TEL:+81-6-6561-3225 FAX:+81-6-6561-8466
http://www.hakko.com E-mail:sales@hakko.com

HONG KONG
HAKKO DEVELOPMENT CO., LTD.
ROOM 1504, EASTERN HARBOUR CENTRE,
28 HOI CHAK STREET, QUARRY BAY, HONG KONG.
TEL: 2811-5588 FAX: 2590-0217
http://www.hakko.com.hk
E-mail:info@hakko.com.hk

SINGAPORE
HAKKO PRODUCTS PTE., LTD.
1, GENTING LINK #02-04, PERFECT INDUSTRIAL
BUILDING, SINGAPORE 349518
TEL: 6748-2277 FAX: 6744-0033
http://www.hakko.com.sg
E-mail:sales@hakko.com.sg

CA00357EbZa001 2010.9

Please access to the following for the other Sales affiliates.
<http://www.hakko.com>

Specifications and design are subject to change without notice. Copyright Hakko Corporation. All right reserved.